

Simplified and Efficient Fixture Removal with the All-in-One Remover Kit



✓ Case Summary 🔍

Patient Information

- Age/Gender: 54-year-old male
- Systemic Condition: No underlying systemic disease

Clinical Findings

- Tooth Site: #37
- Diagnosis: Peri-implantitis
- Radiographic Findings: Approximately half of the alveolar bone has resorbed around the third-party implant fixture (Brand "O").

Treatment Plan

- Due to progressive peri-implantitis and significant bone resorption, the **implant was planned for removal.**
- The **All-in-One Remover Kit** was selected to ensure atraumatic fixture removal with minimal bone loss.

Procedure Details

- The following components from the **All-in-One Remover Kit** were utilized:
 - **Remover Hex Driver**
 - **1.2 Hex Screw**
 - **Fixture Remover**
- A removal torque of 200N/cm was applied in a controlled, counterclockwise direction for fixture removal.
- The fixture was extracted successfully without alveolar bone damage, thereby preserving bone integrity.

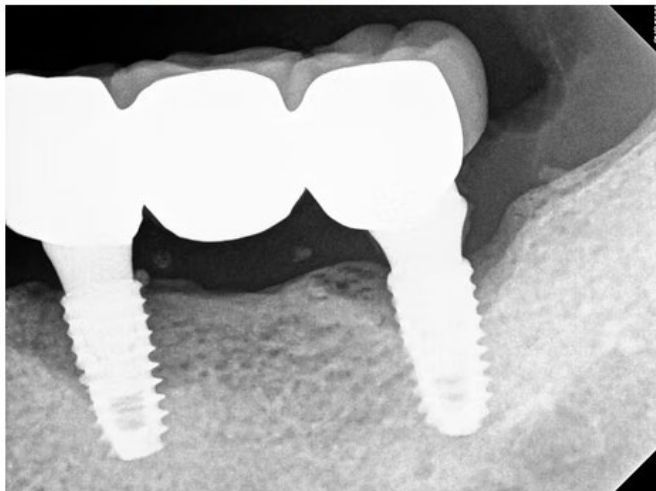
Conclusion

Using the All-in-One Remover Kit, the implant was removed precisely and atraumatically, preserving bone integrity and ensuring no structural compromise. Despite the high removal torque requirement (200N/cm), the procedure was completed smoothly without causing alveolar bone damage.

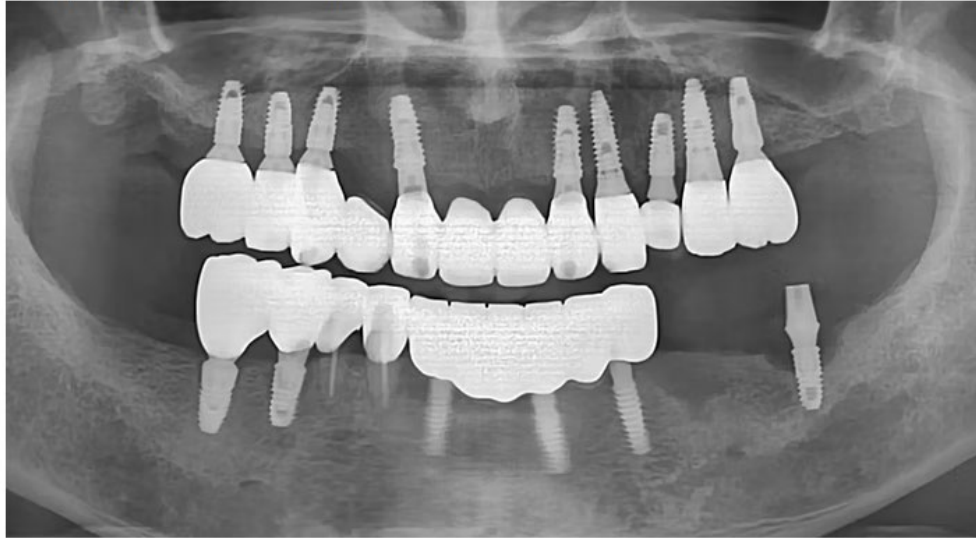
Case Presentation

1 Pre-Op

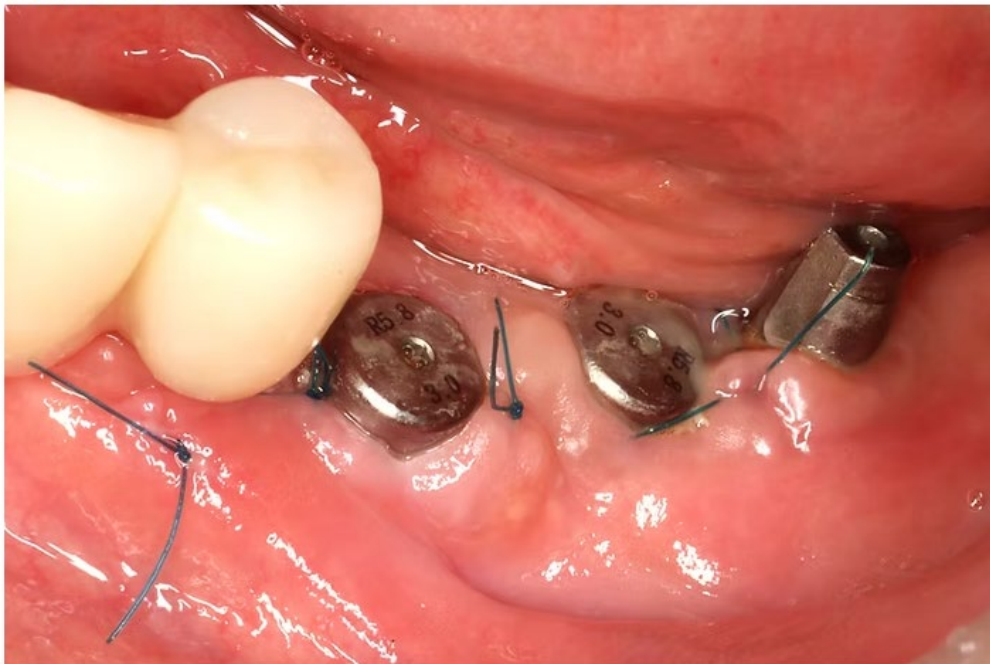
- Pre-Op Periapical Radiograph



- As the prosthesis was removed, the #35 fixture was also taken out, leaving only the abutment at #37.
- The panoramic radiograph confirmed the need for implant removal at #37 due to peri-implantitis, showing that approximately half of the alveolar bone around the third-party fixture (Brand 'O') had been resorbed.



- New implants were placed at #35 and #36, followed by the surgical removal of the implant at #37.



2 Product Used

[All-in-One Remover Kit]

- Fixture Remover Positioner • Fixture Remover Hex • Extend Adapter & Hex Driver • Fixture Remover



**Fixture
Remover
Positioner**



**Fixture
Remover
Hex**

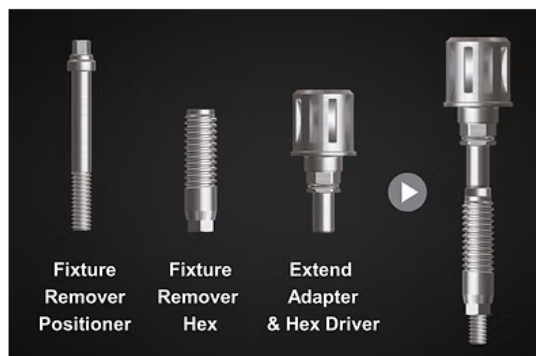


**Extend
Adapter
& Hex Driver**



**Fixture
Remover**

3 Surgery - Fixture Removal



- The appropriate **Fixture Remover Positioner** and **Fixture Remover Hex** were selected and assembled.
- These components were then connected to the **Extend Adapter & Hex Driver**.
- The assembled unit was connected to the fixture and tightened to 80 N/cm using a torque ratchet.



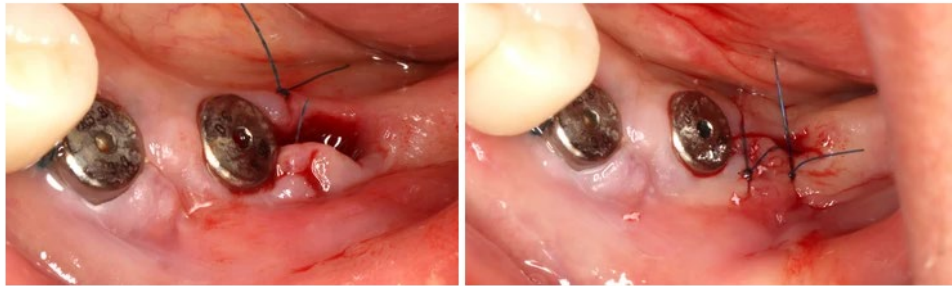
- Then, the **Extend Adapter & Hex Driver** were removed, and the **Fixture Remover** was connected to the fixture at the removal site.



- The **Fixture Remover** was turned **counterclockwise** to lock, then gradually tightened to 200N/cm. Upon reaching 200N/cm, a 5-minute rest was taken before repeating the tightening process until the fixture was removed.

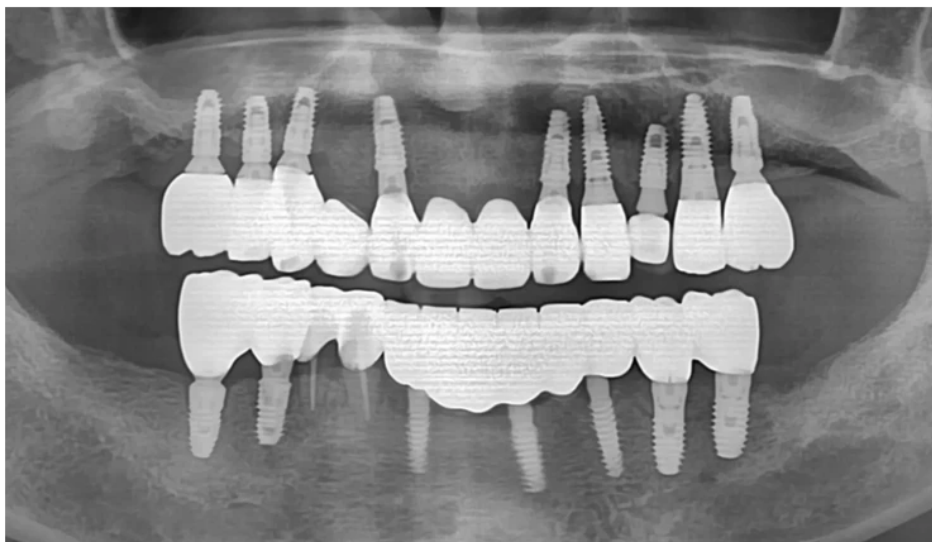
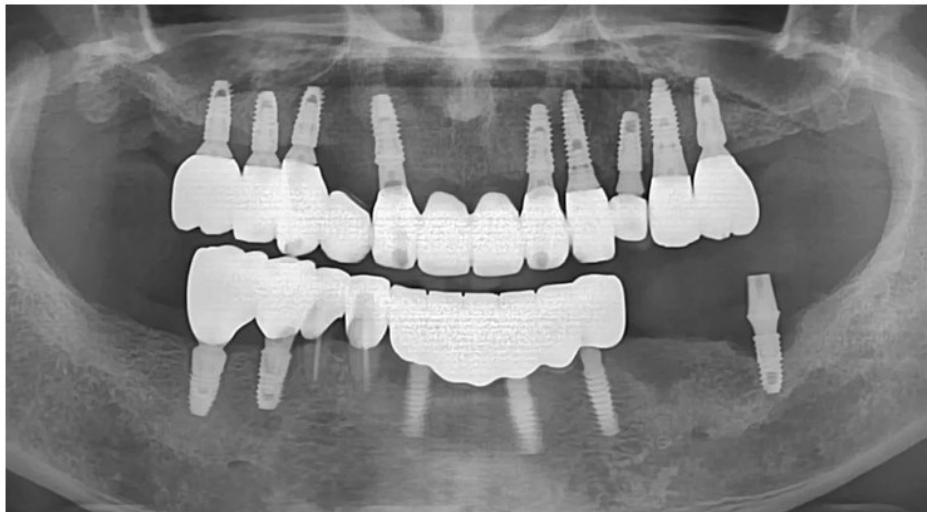


- The implant was removed precisely and atraumatically, preserving bone integrity. The surgical site was closed with two sutures.



4 Post-Op

- Following #37 fixture removal, no additional treatment is planned as the site will be maintained in its current state.
- **Before & After**



Youtube

[Simplified Fixture removal using all in one remover kit ENG - YouTube](#)